



**REGULAR MEETING
UNITED LAGUNA WOODS MUTUAL LANDSCAPE COMMITTEE**

**Monday, June 26, 2023 – 1:30 p.m.
BOARD ROOM/VIRTUAL
Laguna Woods Village
24351 El Toro Road, Laguna Woods, CA**

Laguna Woods Village owners/residents are welcome to participate in all open committee meetings and submit comments or questions for virtual meetings using one of three options:

1. *Join in-person in the Community Center Board Room*
2. *Join the Zoom meeting at <https://zoom.us/j/93131082872>. Please raise your “Virtual Hand” during the agenda item you wish to speak to.*
 - *If you have a comment regarding a topic that is **not** on the agenda, please raise your “Virtual Hand” during the “Member Comments” agenda item.*
3. *Via email to meeting@vmsinc.org any time before the meeting is scheduled and before the agenda item you wish to speak to during the meeting. Please use the name United Mutual Landscape Committee in the subject line of the email. Name and unit number must be included.*

FYI: All landscaping rules and regulations may be found in the United Landscape Manual on the Village website: <https://www.lagunawoodsvillage.com/documents/view/United-Landscape-Maintenance-Manual-Updated-June-2020.pdf?v=1597776227>

AGENDA

1. Call Meeting to Order
2. Acknowledgment of Media
3. Approval of the Agenda
4. Approval of the Meeting Report for May 22, 2023
5. Remarks of the Chair
6. Department Head Update
 - a. Project Log
 - b. Water Use Comparison Graph
 - c. Tree Work Status Report
 - d. Key Performance Indicators

7. Member Comments (Items Not on the Agenda)
8. Response to Member Comments

Items for Discussion and Consideration

9. Tree Removal Request – 100-A Via Estrada
10. Tree Removal Request – 559-C Avenida Sevilla

Concluding Business

11. Committee Member Comments
12. Date of Next Meeting – August 28, 2023 at 1:30 p.m.
13. Adjournment

Diane Casey, Chair
Kurt Wiemann, Staff Officer
Jayanna Abolmoloki, Landscape Administrative Assistant
Telephone: 949-268-2565

*A quorum of the United Board, or more, may also be present at the meeting.



OPEN MEETING

**REGULAR MEETING OF THE UNITED LAGUNA WOODS MUTUAL
LANDSCAPE COMMITTEE**

**Monday, May 22, 2023 – 1:30 P.M.
BOARD ROOM/VIRTUAL MEETING
Laguna Woods Village Community Center Board Room
24351 El Toro Road**

REPORT

COMMITTEE MEMBERS PRESENT: Chair- Diane Casey, Sue Quam, Anthony Liberatore

COMMITTEE MEMBERS ABSENT: None.

OTHERS PRESENT: Vu Chu

ADVISORS PRESENT: Mary Sinclair, Ann Beltran

STAFF PRESENT: Kurt Wiemann, Jayanna Abolmoloki

1. Call to Order

Director Liberatore called the meeting to order at 1:33 p.m. and immediately called for a recess. Chair Casey continued the meeting at 1:41 p.m.

2. Acknowledgment of Media

No media were present.

3. Approval of the Agenda

Director Quam made a motion to approve the agenda. Director Liberatore seconded. The agenda was approved unanimously.

4. Approval of the Meeting Report for April 24, 2023

Director Quam made a motion to approve the report. The committee was in unanimous support.

5. Chair's Remarks

Chair Casey apologized for arriving late.

6. Department Head Update

Mr. Wiemann informed the audience that landscaping services is making progress on the weed issue by hiring additional contract workers and spraying five times per week in lieu of the normal three times. Additionally, staff are spraying broadleaf in the lawns weekly.

6a. Project Log

Mr. Wiemann discussed the provided project log in detail. Members made comments and asked questions.

6b. Water Use Comparison Graph

Mr. Wiemann discussed the provided graph in detail. Members made comments and asked questions.

7. Member Comments (Items not on the agenda)

Topics included:

- Turf Reduction
- Unit specific requests and complaints
- Weeds

8. Response to Member Comments

Mr. Wiemann and members of the committee responded to the member comments.

Items for Discussion and Consideration

9. Tree Removal Request – 118-U Via Estrada

The Committee reviewed the Staff Report along with the provided attachments. Members made comments and asked questions.

Director Liberatore made a motion to accept staff recommendation to deny the request for removal of one Canary Island Pine tree located at 118-U Via Estrada. Director Quam seconded. The motion passed unanimously.

Concluding Business

11. Committee Member Comments

Various comments were made.

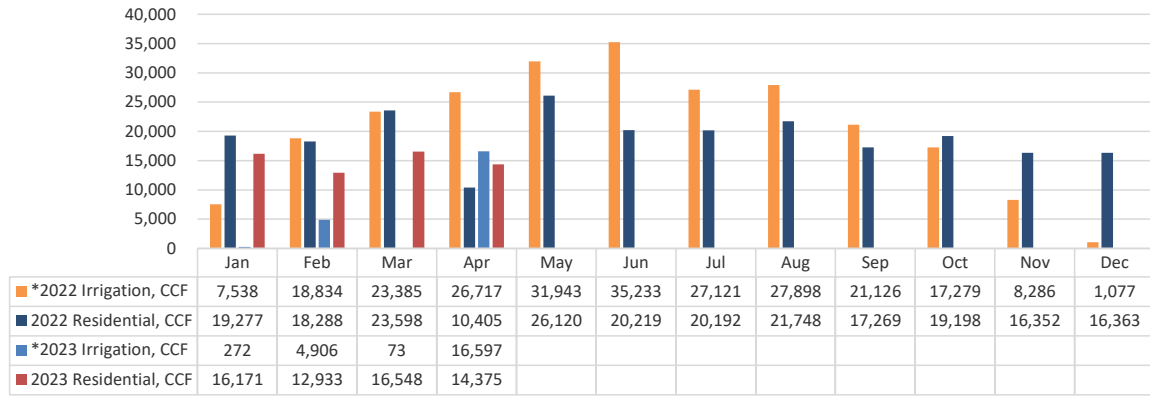
12. Date of Next Meeting – June 26, 2023 at 1:30 p.m.

13. Adjourned at 2:25 p.m.

United Mutual Landscape Project Log June 26, 2023 2023 Reserve Fund Projects (As of 05/31/2023)									
Project	Work Unit	Description	Status	Contract Number	Estimated Completion	Completion	Budget	YTD*	Balance
Landscape Modification/Turf Reduction	510-Staff	Areas to eliminate inefficient maintenance and high water usage; replace with easier to maintain/water efficient landscape with low water use irrigation.	Work on locations approved by Committee in process; expected completion 8/1/23	n/a	Annual	27.35%	\$ 177,744	\$48,611	\$ 129,133
	540-Staff		Work scheduled for Fall 2023	n/a	Annual	21.58%	\$ 24,985	\$ 5,392	\$ 19,593
	Contracted		Work started 5/8/2023; estimated completion 7/26/23	P100011800	7/26/2023	3.69%	\$ 189,480	\$ 7,000	\$ 182,480
Slope Renovation/Maintenance	Mission Landscape	Annual cutting back and removal of vegetation on slopes. Maintenance thereafter.	In progress, on schedule.	MIS106-2201-01	Annual	47.46%	\$ 73,913	\$ 35,076	\$ 38,837
Tree Maintenance	Great Scott Tree Services, Inc.	The annual program a combination of contracted work and in-house staff, working on a 5 year species-based trim cycle. Contractor performs mainly scheduled annual maintenance and isolated removals. Staff crew focuses on customer service.	Contracted tree crews trimmed 2,041 trees, removed 8 and planted 1 tree.	P100011261	Annual	75.82%	\$ 531,146	\$ 402,712	\$ 128,434
	In-House Tree Crew		As of May 31, 2023, the in-house crew trimmed 109 trees, removed 23 and planted 4 trees.	n/a		22.90%	\$ 395,240	\$ 90,492	\$ 304,748

*Completion based upon invoices received to-date; 06/16/2023

United Mutual - Water Consumption 2022-2023 Trends



*Estimated Irrigation Usage

United Mutual Off Schedule tree Work						
Date	Manor	Description	tree Type	Labor Hours	Reason	Decision Level
11/1/2021	43	removal	Fruitless plum	2	small tree in decline, pest	Staff
11/1/2021	2018	removal	Australian flame tree	2.5	major limb loss no restoration possible	Staff
11/2/2021	173	clearance	Hollywood juniper	1	touching roof	Staff
11/2/2021	2149	trim	Brazilian Pepper	3	remove end weight	Staff
11/2/2021	2012	hanger	Silk Oak	2	hanging over the sidewalk	Staff
11/2/2021	2012	removal	Avocado	3	resident request non-standard	Staff
11/2/2021	2012	removal	Ficus Benjamina	4.5	major limb loss no restoration possible	Staff
11/8/2021	238	trim	King Palm	2.5	trim tree	Staff
11/8/2021	123	removal	Aleppo pine	4.5	tree was encroaching the building, out grew area	Staff
11/8/2021	632	removal	Brazilian Pepper	4	tree was in decline, 60% dieback	Staff
11/8/2021	2151	removal	Ficus Benjamina	3	small ficus growing in planter near manor wall	Staff
11/9/2021	2016	clearance	Rusty leaf	2.5	patio clearance	Staff
11/9/2021	149	hanger	King Palm	1	remove frond from roof	Staff
11/12/2021	2060	clearance	Ficus Benjamina	3	touching roof	Staff
11/18/2021	205	clearance	Bottle tree	2	touching roof	Staff
11/19/2021	598	removal	Torulosa (3)	5	old and woody Junipers at carport location	Staff
12/2/2021	2051	removal	Black stem pitt	4	dead, pest, old and woody	Staff
12/2/2021	2056	removal	New Zealand tree	5	split limb unable to restore	Staff
12/8/2021	943	clearance	Crape Myrtle	3	touching roof	Staff
12/9/2021	124	hanger	Bottlebrush	2	hanger in the canopy	Staff
12/9/2021	541	clearance	Carrotwood	8	two Carrotwood and a trumpet tree clearance	Staff
12/15/2021	80	removal	Chitalpa	3	uprooted poor structure	Staff
12/15/2021	601	hanger	Eucalyptus	1	hanger in the canopy	Staff
12/15/2021	181	removal	Chitalpa	3	uprooted poor structure	Staff
12/15/2021	113	hanger	Flaxleaf	2	hanger in the canopy	Staff
12/15/2021	649	removal	Evergreen pear	5	uprooted poor structure	Staff
12/15/2021	649	removal	Evergreen	2	dead, pest red spider mite	Staff
12/15/2021	218	hanger	Sweetgum	2	hanger in the canopy	Staff
12/16/2021	718	hanger	Melaluca	2	hanger in the canopy	Staff
12/16/2021	879	hanger	Bottlebrush	2	hanger in the canopy	Staff
12/16/2021	192	hanger	Carrotwood	2	hanger in the canopy	Staff
12/16/2021	817	hanger	Brazilian Pepper	2	hanger in the canopy	Staff
12/16/2021	95	hanger	Eucalyptus	3	hanger in the canopy	Staff
12/16/2021	621	removal	Jacaranda	5	storm related	Staff
12/16/2021	952	hanger	New Zealand tree	2	hanger in the canopy	Staff
12/16/2021	817	hanger	Brazilian Pepper	2	hanger in the canopy	Staff
12/16/2021	195	hanger	Jacaranda	2	hanger in the canopy	Staff
12/16/2021	52	hanger	Brazilian Pepper	2	hanger in the canopy	Staff
12/17/2021	541	clearance	Carrotwood	4	touching roof	Staff
12/17/2021	95	clearance	Eucalyptus	3	touching roof	Staff
12/18/2021	2056	removal	Cedar	4	storm related	Staff
12/18/2021	2056	clearance	Camphor	3	touching roof	Staff
12/28/2021	129	hanger	Eucalyptus	2	hanger in the canopy	Staff
12/29/2021	621	removal	Jacaranda	4	storm related	Staff
12/29/2021	198	hanger	King palm	1	dead branch hanging	Staff
12/29/2021	753	hanger	Eucalyptus	2	hanger in the canopy	Staff
12/29/2021	753	hanger	Carrotwood	2	hanger in the canopy	Staff
1/4/2022	2028	clearance	Ficus Benjamina	4	other department assist, painters	Staff
1/4/2022	646	hanger	Bottlebrush	2	hanger in the canopy	Staff
1/7/2022	184	hanger	Canary Island Pine	4	hanger in the canopy	Staff
1/14/2022	955	removal	Edible fig	6	resident request non-standard	Staff
1/17/2022	915	removal	Tangerine	3	resident request non-standard	Staff
1/17/2022	619	removal	Bottlebrush	4	split limb unable to restore	Staff
1/17/2022	920	hanger	Canary Island Pine	2	hanger in the canopy	Staff
1/18/2022	2144	removal	Carrotwood	5	Board approved	Staff
1/18/2022	2144	trim	Carrotwood	8	trim 4 Carrotwood end weight	Staff
1/18/2022	601	trim	Eucalyptus	9	end weight, broken branches, clearance	Staff
1/18/2022	266	trim	Brisbane box	4	crown raise	Staff
1/18/2022	266	removal	Flowering Plum	2	dead, pest scorce	Staff
1/19/2022	375	clearance	Crape Myrtle	3	touching roof	Staff
1/25/2022	2030	trim	Ficus Benjamina	42	full trim	Board Approved
1/25/2022	2142	removal	Chitalpa	6	uprooted poor structure	Staff
1/27/2022	134	hanger	Melaluca	4	hanger in the canopy	Staff
1/27/2022	352	clearance	Brazilian Pepper	4	touching roof	Staff
1/27/2022	352	clearance	Fern Pine	4	touching roof	Staff
1/28/2022	189	removal	Edible Fig	5	resident request non-standard	Staff
1/23/2022	2178	clearance	Indian Laurel	1	touching roof	Staff
2/23/2022	2178	clearance	Ficus Nitida	1	touching roof	Staff
2/23/2022	2122	trim	Mediterranean fan palm	2	end weight, broken branches, clearance	Staff
2/24/2022	385	trim	Chinese Elm	2	crown raise	Staff
2/24/2022	383	clearance	Carrotwood	2	touching roof	Staff

2/24/2022	185	clearance	Canary Island Pine 2	2	dead branch hanging	Staff
2/24/2022	921	trim	Crape Myrtle	2	touching roof	Staff
3/2/2022	94	clearance	Magnolia 2	2	touching roof	Staff
3/2/2022	94	clearance	Persimmon	1	touching roof	Staff
2/24/2022	285	clearance	Brazilian Pepper	3	trim and crown raise	Staff
2/24/2022	319	clearance	Norfolk pine	2	hanger in the canopy	Staff
2/24/2022	197	removal	Queen Palm	4	in decline, dead	Staff
3/2/2022	588	removal	Coral tree	4	in decline, dead	Staff
3/2/2022	397	removal	Yucca	3	in decline, dead	Staff
3/10/2022	934	removal	Liquid Ambar	12	in decline, dead	Staff
2/25/2022	2189	clearance	Jacaranda	1	touching roof	Staff
2/25/2022	2190	removal	Edible fig	1	resident request non-standard	Staff
2/25/2022	2088	clearance	Ficus Benjamina	1	crown raise	Staff
2/25/2022	2065	trim	Torulosa (2)	2	end weight, broken branches, clearance	Staff
3/18/2022	397	removal	Bird of Paradise	2	growing into bldg	Staff
3/11/2022	238	clearance	Ficus Benjamina	7	deadwood	Staff
3/11/2022	238	clearance	Queen Palm	7	deadwood	Staff
3/2/2022	588	removal	Coral tree	5	resident request	Staff
3/11/2022	239	trim	Guadalupe Palm (2)	4	full trim	Staff
3/11/2022	238	trim	queen Palm (2)	4	full trim	Staff
3/11/2022	238	trim	Edible fig	4	full trim	Staff
3/11/2022	238	trim	Edible fig	6	full trim	Staff
3/11/2022	239	trim	Edible fig	6	full trim	Staff
3/18/2022	2087	trim	Carrotwood	8	full trim	Staff
3/18/2022	2087	trim	Carolina	4	full trim	Staff
3/18/2022	2087	trim	Carrotwood	8	full trim	Staff
3/18/2022	2085	trim	Carolina	3	full trim	Staff
3/28/2022	334	clearance	Xylasma(5)	12	clear too large	Staff
3/29/2022	2037	trim	White Birch	6	end weight, crown raise	Staff
3/29/2022	2041	clearance	Long Leafed	4	touching roof	Staff
3/29/2022	2032	clearance	New Zealand tree	6	touching roof	Staff
3/29/2022	2021	removal	Crape Myrtle	3	in decline, dead	Staff
3/29/2022	2152	removal	New Zealand tree	4	in decline, dead	Staff
3/29/2022	343	clearance	Catalina Cherry (2)	4	clear, end weight	Staff
3/30/2022	463	clearance	Brazilian Pepper	3	clear, end weight	Staff
3/30/2022	602	trim	New Zealand tree	4	full trim	Staff
3/30/2022	602	clearance	xylasma hedge	4	clear too large	Staff
3/31/2022	2218	trim	Yucca	10	full trim	Staff
4/1/2022	255	clearance	Magnolia	4	clear, end weight	Staff
4/1/2022	810	removal	Plum	3	in decline, dead	Staff
4/5/2022	33	clearance	Canary Island Pine	3	touching roof	Staff
4/5/2022	77	removal	Liquid Ambar	8	in decline, dead	Staff
4/5/2022	86	removal	Liquid Ambar	8	in decline, dead	Staff
4/6/2022	507	removal	Liquid Ambar	8	in decline, dead	Staff
4/6/2022	609	trim	Phoenix Carriensis	4	full trim	Staff
4/6/2022	2021	hanger	Brazilian Pepper	3	clear, end weight	Staff
4/13/2022	2141	trim	Eriobotrya Japonica	4	clear, end weight	Staff
4/13/2022	63	removal	Ficus	4	in decline, dead	Staff
4/14/2022	912	trim	Windmill Palms	4	clear, end weight	Staff
5/12/2022	2210	removal	Pittosporum	6	in decline, dead	Staff
5/12/2022	2220	removal	New Zealand tree	3	in decline, dead	Staff
5/12/2022	946	hanger	Eucalyptus	4	hanger in the canopy	Staff
5/20/2022	2047	trim	Olive	6	clear, end weight	Staff
5/20/2022	2047	trim	Olive	6	clear, end weight	Staff
5/23/2022	2050	removal	Olea European Olive	20	in decline, dead	Staff
5/23/2022	2091	trim	Yucca Gloriosa	4	clear, end weight	Staff
5/23/2022	2091	trim	2 California Pepper	5	full trim	Staff
5/23/2022	2091	trim	2 Yucca's Gloriosa	4	full trim	Staff
5/24/2022	2189	removal	Italian Cypress	6	in decline, dead	Staff
5/25/2022	2144	trim	Wilson Holly	2	full trim	Staff
5/25/2022	2100	removal	2 Catalina Cherry	3	in decline, dead	Staff
5/25/2022	2100	trim	7 Catalina Cherry	3	clear, end weight	Staff
5/25/2022	2123	clearance	Cajeput tree	2	clearance	Staff
5/26/2022	2124	removal	Prunus Cerasifera	3	in decline, dead	Staff
5/26/2022	2123	trim	2 Yucca's Gloriosa	5	full trim	Staff
5/26/2022	2106	trim	2 African Sumac	8	full trim	Staff
5/26/2022	2106	clearance	Edible loquat	2	clear too large	Staff
5/26/2022	2053	clearance	Catalina Cherry (3)	2	clear, end weight	Staff
5/26/2022	2057	hanger	Callistemon	1	hanger in the canopy	Staff
5/27/2022	2140	trim	hedge on carports	8	full trim	Staff
5/27/2022	750	clearance	Carolina	2	clear, end weight	Staff
5/27/2022	750	clearance	bottle brush	2	clear, end weight	Staff
5/27/2022	347	trim	2 king palms	3	full trim	Staff

5/27/2022	729	clearance	Magnolia	2	clear, end weight	Staff
5/27/2022	692	trim	loquat	2	full trim	Staff
5/27/2022	712	trim	Brush Cherry	1	full trim	Staff
5/27/2022	39	removal	8 Junipers	4	in decline, dead	Staff
5/27/2022	404	trim	C. Myrtle	2	full trim	Staff
5/31/2022	45	clearance	Peppermint	2	clear, end weight	Staff
5/31/2022	824	clearance	loquat	1	clear, end weight	Staff
5/31/2022	824	clearance	loquat	1	clear, end weight	Staff
5/31/2022	788	clearance	Rubber tree	2	full clearance	Staff
5/31/2022	150	clearance	Magnolia	2	clear, end weight	Staff
5/31/2022	150	clearance	Magnolia	2	clear, end weight	Staff
5/31/2022	150	clearance	Magnolia	2	clear, end weight	Staff
5/31/2022	376	removal	Ligustrum	1	in decline, dead	Staff
5/31/2022	376	removal	Ligustrum	1	in decline, dead	Staff
5/31/2022	8	removal	Mayten tree	2	in decline, dead	Staff
5/31/2022	375	removal	Queen Palm	2	in decline, dead	Staff
5/31/2022	375	removal	Queen Palm	2	in decline, dead	Staff
5/31/2022	375	removal	Queen Palm	2	in decline, dead	Staff
5/31/2022	431	trim	King palm	2	full trim	Staff
5/31/2022	818	trim	Orchid tree	2	full trim	Staff
6/1/2022	640	trim	Brazilian Pepper	2	full trim	Staff
6/3/2022	248	clearance	Chinese Elm	2	full clearance	Staff
6/3/2022	466	clearance	2 Carolina Cherries	2	clear, end weight	Staff
6/8/2022	124	clearance	Cedar and Crape Myrtle	4	clear, end weight	Staff
6/8/2022	624	clearance	Rusty leaf	3	clear, end weight	Staff
6/8/2022	200	trim	2 Scheffleras	5	full trim	Staff
6/8/2022	915	clearance	Brazilian Pepper	2	clear, end weight	Staff
6/13/2022	2049	trim	Wilson Holly	2	full trim	Staff
6/13/2022	756	hanger	Erithrina Cafpra	3	hanger in the canopy	Staff
6/17/2022	302	clearance	2 California Pepper	4	clear, end weight	Staff
6/24/2022	412	trim	Rusty leaf	12	clear, end weight	Staff
6/24/2022	410	hanger	Date Palm	2	hanger in the canopy	Staff
6/24/2022	546	hanger	Norus Alba	4	hanger in the canopy	Staff
6/27/2022	466	removal	2 Catalina Cherry	4	in decline, dead	Staff
6/27/2022	205	clearance	3 Catalin Cherries	6	clearance	Staff
6/27/2022	100	removal	Monterrey Pine	10	in decline, dead	Staff
6/27/2022	100	trim	Silk Oak	5	full trim	Staff
6/27/2022	100	trim	3 Pinus Canariensis	12	full trim	Staff
6/28/2022	2	trim	cliff date palm	4	full trim	Staff
6/28/2022	895	removal	Juniperus	6	in decline, dead	Staff
6/28/2022	840	trim	Carrotwood	6	full trim	Staff
6/28/2022	840	trim	2 Ficus Benjamina	6	full trim	Staff
6/28/2022	895	removal	number of volunteers	6	in decline, dead	Staff
6/28/2022	954	hanger	Brazilian Pepper	2	hanger in the canopy	Staff
6/28/2022	751	removal	yucca	4	in decline, dead	Staff
6/29/2022	105	removal	Orchid tree	3	in decline, dead	Staff
6/29/2022	2028	hanger	bottle brush	2	hanger in the canopy	Staff
6/29/2022	252	trim	Carrotwood	4	full trim	Staff
7/5/2022	2019	trim	Ceretonia siliqua	6	full trim	Staff
7/5/2022	255	trim	Liquid Ambar	6	full trim	Staff
7/5/2022	651	trim	gold medallion	4	full trim	Staff
7/5/2022	775	trim	maleluca and gold medallion	4	full trim	Staff
7/7/2022	424	trim	2 canary Island Pines	20	full trim	Staff
7/8/2022	865	trim	2 Guadalupe Palms	6	full trim	Staff
7/8/2022	865	trim	2 Guadalupe Palms	6	full trim	Staff
7/8/2022	802	trim	Bottle tree	4	full trim	Staff
7/11/2022	188	trim	2 canary Island Pines	25	full trim	Staff
7/11/2022	188	clearance	Ficus Benjamina	2	clear, end weight	Staff
7/12/2022	184	trim	2 canary Island Pines	27	full trim	Staff
7/12/2022	188	clearance	Sequoia Sempervirens	4	clear, end weight	Staff
7/12/2022	184	hanger	Ayoucaria Columnaris	3	hanger in the canopy	Staff
7/13/2022	175	trim	Olea European Olive	4	full trim	Staff
7/13/2022	3	clearance	Canary Island	4	clear, end weight	Staff
7/13/2022	274	trim	2 canary Island Pines	20	full trim	Staff
7/14/2022	18	removal	Texas Redbud	3	in decline, dead	Staff
7/14/2022	926	trim	yucca	6	full trim	Staff
7/14/2022	709	trim	Black Pine	4	full trim	Staff
7/14/2022	927	hanger	Aleppo pine	10	hanger in the canopy	Staff
7/14/2022	861	removal	Spartan Juniper	3	in decline, dead	Staff
7/15/2022	756	hanger	Erythrina Caffra	3	hanger in the canopy	Staff
7/15/2022	2133	removal	4 podocarpus	5	in decline, dead	Staff
7/15/2022	2134	trim	2 New Zealand	3	full trim	Staff
7/15/2022	944	clearance	Crape Myrtle	10	clearance	Staff

7/18/2022	896	hanger	Shamel Ash	4	hanger in the canopy	Staff
7/18/2022	862	hanger	Evergreen pear	4	hanger in the canopy	Staff
7/21/2022	583	hanger	Chinese Elm	8	hanger in the canopy	Staff
7/27/2022	352	clearance	Carrotwood	1	clear, end weight	Staff
7/27/2022	352	clearance	Weeping Fig	1	clear, end weight	Staff
7/27/2022	352	clearance	Juniper	1	clear, end weight	Staff
7/27/2022	352	clearance	Weeping Fig	1	clear, end weight	Staff
7/27/2022	352	clearance	Juniper	1	clear, end weight	Staff
7/27/2022	352	clearance	Juniper	1	clear, end weight	Staff
7/27/2022	352	clearance	Brazilian Pepper	1	clear, end weight	Staff
7/27/2022	352	clearance	Edible Fig	1	clear, end weight	Staff
7/27/2022	352	clearance	Edible loquat	1	clear, end weight	Staff
7/27/2022	352	clearance	Fern Pine	1	clear, end weight	Staff
7/27/2022	352	clearance	Fern Pine	1	clear, end weight	Staff
7/27/2022	352	clearance	Fern Pine	1	clear, end weight	Staff
7/27/2022	352	clearance	Fern Pine	1	clear, end weight	Staff
7/27/2022	285	clearance	Chinese Pistache	2	clear, end weight	Staff
7/27/2022	24	clearance	Star Pine	2	clear, end weight	Staff
7/27/2022	450	removal	Leyland Cypress	2	in decline, dead	Staff
7/27/2022	469	removal	Purple Leaf Plum	4	in decline, dead	Staff
7/27/2022	163	clearance	Crape Myrtle	2	clear, end weight	Staff
7/27/2022	163	clearance	Crape Myrtle	2	clear, end weight	Staff
7/27/2022	236	clearance	Indian Laurel	3	clear, end weight	Staff
7/27/2022	236	clearance	Leyland Cypress	2	clear, end weight	Staff
7/27/2022	236	clearance	Carrotwood	3	clear, end weight	Staff
7/28/2022	2133	removal	Torulosa	2	in decline, dead	Staff
7/28/2022	2133	trim	Podocarpus	1	full trim	Staff
7/28/2022	2133	trim	Podocarpus	1	full trim	Staff
7/28/2022	2133	removal	Podocarpus	2	in decline, dead	Staff
7/28/2022	2133	removal	Podocarpus	2	in decline, dead	Staff
7/28/2022	2133	removal	Podocarpus	2	in decline, dead	Staff
7/28/2022	2133	removal	Podocarpus	2	in decline, dead	Staff
7/28/2022	2131	removal	Hibiscus	1	in decline, dead	Staff
7/28/2022	2073	clearance	Crape Myrtle	1	clear, end weight	Staff
7/28/2022	900	removal	African Sumac	3	in decline, dead	Staff
8/1/2022	100	clearance	Torulosa	3	clear, end weight	Staff
8/1/2022	100	hanger	juniper	3	hanger in the canopy	Staff
8/1/2022	872	removal	Avocado	3	resident Request	Staff
8/1/2022	723	clearance	Silk Oak	3	clear, end weight	Staff
8/1/2022	892	clearance	Rusty leaf	3	clear, end weight	Staff
8/2/2022	718	trim	Cajeput tree	5	full trim	Staff
8/2/2022	717	trim	Liquid Ambar	6	full trim	Staff
8/3/2022	910	hanger	Liquid Ambar	2	hanger in the canopy	Staff
8/3/2022	904	clearance	Maleluca	2	clear, end weight	Staff
8/5/2022	215	hanger	Liquid Ambar	1	hanger in the canopy	Staff
8/10/2022	416	clearance	Maleluca	2	clear, end weight	Staff
8/10/2022	514	clearance	Crape Myrtle	2	clear, end weight	Staff
8/16/2022	211	hanger	american sweetgum	4	hanger in the canopy	Staff
8/16/2022	605	removal	redbud	2	in decline, dead	Staff
8/16/2022	595	removal	Plum	2	in decline, dead	Staff
8/16/2022	2141	hanger	ceiba speciosa	2	hanger in the canopy	Staff
8/16/2022	2006	removal	podocarpus and bottlebrush	4	in decline, dead	Staff
8/16/2022	2077	removal	Juniper	3	in decline, dead	Staff
8/16/2022	2077	clearance	Fern Pine	2	clear, end weight	Staff
8/22/2022	490	trim	2 Canary Island Pine	16	full trim	Staff
8/23/2022	511	removal	Ficus Carica	6	in decline, dead	Staff
8/23/2022	499	trim	2 Pinus Canariensis	14	full trim	Staff
8/24/2022	490	trim	Pinus Radiata	4	full trim	Staff
8/24/2022	491	trim	2 Pinus Canariensis	16	full trim	Staff
8/24/2022	491	trim	Pinus Canariensis	16	full trim	Staff
8/25/2022	54	trim	Pinus Canariensis	16	full trim	Staff
8/25/2022	54	trim	Carrotwood	8	full trim	Staff
8/25/2022	262	removal	Crape Myrtle	5	in decline, dead	Staff
8/25/2022	418	trim	King palm	1	full trim	Staff
8/25/2022	418	trim	King palm	1	full trim	Staff
8/25/2022	418	trim	King palm	1	full trim	Staff
8/25/2022	417	trim	King palm	1	full trim	Staff
8/25/2022	417	trim	Sentry Palm	1	full trim	Staff
8/26/2022	468	clearance	Magnolia	2	clear, end weight	Staff

8/26/2022	407	trim	Chinese Tallow	4	full trim	Staff
8/26/2022	626	clearance	Liquid Ambar	3	clear, end weight	Staff
8/26/2022	94	removal	Monterrey Pine	4	in decline, dead	Staff
8/26/2022	281	clearance	Bottle tree	2	clear, end weight	Staff
8/26/2022	397	trim	Magnolia	4	full trim	Staff
8/26/2022	915	trim	African Sumac	4	full trim	Staff
8/26/2022	395	clearance	Carolina Cherry	2	clear, end weight	Staff
8/29/2022	131	removal	Pinus Canariensis	10	in decline, dead	Staff
8/29/2022	131	trim	2 Pinus Canariensis	16	full trim	Staff
8/29/2022	131	trim	Pinus Canariensis	9	full trim	Staff
8/30/2022	126	trim	loquat, C. Myrtle, & Pine tree	25	full trim	Staff
8/30/2022	131	trim	Liquid Ambar	6	full trim	Staff
8/30/2022	126	clearance	Juniper	2	clear, end weight	Staff
8/31/2022	133	trim	Kaffir Plum	14	full trim	Staff
8/31/2022	129	trim	Canary Island Pine	10	full trim	Staff
8/31/2022	129	trim	Maleluca Cajeput	8	full trim	Staff
9/1/2022	880	trim	3 Wilson Holly	3	full trim	Staff
9/1/2022	880	trim	3 Fern Pine	3	full trim	Staff
9/1/2022	139	trim	2 king palms	4	full trim	Staff
9/1/2022	139	trim	2 king palms	3	full trim	Staff
9/1/2022	860	hanger	Orchid tree	2	hanger in the canopy	Staff
9/1/2022	861	trim	2 Malelucas Cajeput	6	full trim	Staff
9/1/2022	861	clearance	Australian Willow	2	clear, end weight	Staff
9/1/2022	826	trim	2 magnolias	8	full trim	Staff
9/2/2022	643	removal	redbud	3	in decline, dead	Staff
9/2/2022	605	clearance	loquat	2	clear, end weight	Staff
9/2/2022	814	removal	lemon	5	resident Request	Staff
9/2/2022	645	trim	2 Canary Island Pines	8	full trim	Staff
9/2/2022	645	removal	Hollywood juniper	1	in decline, dead	Staff
9/2/2022	644	trim	Canary Island Pine	8	full trim	Staff
9/1/2022	157	clearance	Shamel Ash	4	clear, end weight	Staff
9/6/2022	234	trim	Aleppo pine	8	full trim	Staff
9/6/2022	346	removal	mexican Fan palm	5	in decline, dead	Staff
9/6/2022	889	removal	Orchid tree	6	in decline, dead	Staff
9/6/2022	895	hanger	Aleppo pine	3	hanger in the canopy	Staff
9/6/2022	2029	removal	fan palm	3	in decline, dead	Staff
9/6/2022	2190	removal	Crape Myrtle	4	in decline, dead	Staff
9/6/2022	2048	removal	Orange tree	2	resident Request	Staff
9/6/2022	2055	removal	yucca and agave	4	in decline, dead	Staff
9/7/2022	2205	hanger	stone Pine	3	hanger in the canopy	Staff
9/7/2022	2220	clearance	Hollywood juniper	3	clear, end weight	Staff
9/7/2022	2076	removal	mexican Fan palm	4	in decline, dead	Staff
9/7/2022	400	trim	Golden Rain tree	5	full trim	Staff
9/7/2022	401	removal	Purple Leaf Plum	3	in decline, dead	Staff
9/12/2022	200	removal	Orchid tree	3	in decline, dead	Staff
9/12/2022	89	hanger	Liquid Ambar	3	hanger in the canopy	Staff
9/14/2022	2146	clearance	Mulberry	3	clear, end weight	Staff
9/14/2022	2146	clearance	Mulberry	3	clear, end weight	Staff
9/14/2022	607	trim	Brazilian Pepper	6	full trim	Staff
9/14/2022	560	hanger	Silk Oak	3	hanger in the canopy	Staff
9/14/2022	51	hanger	Liquid Ambar	3	hanger in the canopy	Staff
9/14/2022	370	removal	Dodonaea	3	in decline, dead	Staff
9/14/2022	370	removal	Pencil Cactus	3	in decline, dead	Staff
9/14/2022	370	removal	Pencil Cactus	3	in decline, dead	Staff
9/16/2022	895	trim	Magnolia	4	full trim	Staff
9/16/2022	895	clearance	Pinus Patula	1	clear, end weight	Staff
9/16/2022	239	hanger	Silk Oak	1	hanger in the canopy	Staff
9/16/2022	27	trim	Ginko Biloba	4	full trim	Staff
9/16/2022	27	trim	Ginko Biloba	4	full trim	Staff
9/16/2022	402	trim	Crape Myrtle	2	full trim	Staff
9/16/2022	402	removal	mexican Fan palm	2	in decline, dead	Staff
9/16/2022	129	hanger	Silk Oak	1	hanger in the canopy	Staff
9/16/2022	2048	removal	lemon	1	resident Request	Staff
9/16/2022	514	clearance	Pink Desert Willow	1	clear, end weight	Staff
9/16/2022	2047	clearance	Olive	1	clear, end weight	Staff
9/16/2022	2047	clearance	Olive	1	clear, end weight	Staff
9/19/2022	2098	trim	Fern Pine	5	full trim	Staff
9/19/2022	2097	clearance	Jacaranda	2	clear, end weight	Staff
9/20/2022	117	removal	Lemon	3	resident Request	Staff
9/20/2022	262	clearance	Weeping Fig	2	full clearance	Staff
9/20/2022	262	clearance	Weeping Fig	2	full clearance	Staff
9/20/2022	203	clearance	Carob	2	clear, end weight	Staff

9/20/2022	203	trim	magnolia	5	full trim	Staff
9/20/2022	205	trim	magnolia	5	full trim	Staff
9/20/2022	205	trim	magnolia	5	full trim	Staff
9/20/2022	205	clearance	Bottle tree	2	full clearance	Staff
9/20/2022	697	trim	magnolia	5	full trim	Staff
9/20/2022	542	hanger	lemon	2	resident Request	Staff
9/20/2022	205	trim	Liquid Ambar	1	full trim	Staff
9/20/2022	205	trim	little gem	1	full trim	Staff
9/20/2022	542	hanger	little gem	1	full hanger	Staff
9/23/2022	2109	removal	tree roots	1	full removal	Staff
9/23/2022	2193	hanger	Purple Orchid tree	1	Hange, end weight	Staff
9/26/2022	2050	clearance	3 bottle brush	5	hanger in canopy	Staff
9/26/2022	356	clearance	California Pepper	3	clear from bldg	Staff
9/26/2022	954	clearance	bottle brush	3	clear from bldg	Staff
9/26/2022	958	clearance	Brazilian Pepper	4	clear from bldg	Staff
9/26/2022	55	trim	guadalupe palm	6	full trim	Staff
9/26/2022	259	clearance	aleppo pine	4	clear from bldg	Staff
9/27/2022	149	trim	3 king palms	6	full trim	Staff
9/27/2022	149	trim	2 king palms	4	full trim	Staff
9/27/2022	149	clearance	Star Pine	2	clear from bldg	Staff
9/27/2022	2067	trim	chinese pistache	12	full trim	Staff
9/27/2022	65	hanger	White Alder	2	hanger in canopy	Staff
9/28/2022	644	trim	Orchid tree	4	full trim	Staff
9/28/2022	851	trim	Magenta cherry hedge	14	full trim	Staff
9/28/2022	325	removal	Crape Myrtle	2	In decline and dead	Staff
10/3/2022	847	trim	2 Canary Island	17	full trim	Staff
10/3/2022	847	trim	2 Canary Island	17	full trim	Staff
10/4/2022	852	trim	2 Fern Pine	10	full trim	Staff
10/4/2022	823	trim	stone Pine	5	erim	Staff
10/4/2022	847	trim	2 Canary Island Pines	15	full trim	Staff
10/5/2022	2051	removal	Black stem pitt	3	In decline and dead	Staff
10/5/2022	2012	removal	Pittosporum	8	In decline and dead	Staff
10/5/2022	551	trim	2 Canary Island Pines	16	full trim	Staff
10/5/2022	551	trim	Canary Island Pine	8	full trim	Staff
10/6/2022	551	trim	2 Canary Island pines	16	full trim	Staff
10/6/2022	260	clearance	Maleluca and Ficus Benjamina	4	full clearance	Staff
10/6/2022	260	clearance	2 Brazilian Peppers	4	full clearance	Staff
10/6/2022	260	clearance	2 Ficus Benjamina	2	full clearance	Staff
10/6/2022	260	clearance	Orange tree	1	clearance	Staff
10/11/2022	236	trim	Indian Laurel	20	full trim	Staff
10/11/2022	236	trim	Phoenix Carriensis	12	full trim	Staff
10/13/2022	825	removal	Magnolia Ayandi Flora	8	In decline and dead	Staff
10/14/2022	705	clearance	Crape Myrtle	2	clearn, end weight	Staff
10/17/2022	275	hanger	American Arboric	2	hanger in canopy	Staff
10/17/2022	681	clearance	Bottle tree	2	clear, end weight	Staff
10/17/2022	192	clearance	Crape Myrtle	2	clear, end weight	Staff
10/17/2022	192	clearance	Crape Myrtle	2	clear, end weight	Staff
10/17/2022	192	clearance	Crape Myrtle	2	clear, end weight	Staff
10/17/2022	192	clearance	Crape Myrtle	2	clear, end weight	Staff
10/17/2022	189	clearance	Crape Myrtle	2	clear, end weight	Staff
10/20/2022	2173	removal	Eucalyptus	10	In decline and dead	Staff
10/20/2022	2171	removal	Crape Myrtle	2	in decline, dead	Staff
10/20/2022	382	clearance	redbud	2	clear, end weight	Staff
10/20/2022	650	hanger	Stine pine	4	hanger in canopy	Staff
10/21/2022	481	clearance	2 Turolosas	4	clear, end weight	Staff
10/21/2022	2099	trim	Pittosporum	4	full trim	Staff
10/21/2022	103	clearance	Camphor	3	clear, end weight	Staff
10/21/2022	547	clearance	Magnolia	2	clear, end weight	Staff
10/21/2022	62	clearance	Bottlebrush	2	clear off the bldg	Staff
11/2/2022	382	trim	redbud	3	full trim	Staff
11/2/2022	107	removal	Yucca	4	in decline, dead	Staff
11/2/2022	2064	clearance	C. Myrtle	2	clear off the bldg	Staff
11/3/2022	Ave Carmel	trim	2 king palms	3	full trim	Staff
11/3/2022	Ave Carmel	trim	2 king palms	2	full trim	Staff
11/4/2022	Via Estrada	hanger	Liquid Ambar	2	hanger in canopy	Staff
11/4/2022	418	trim	King palm	2	full trim	Staff
11/9/2022	2073	hanger	Silk Oak	3	hanger in canopy	Staff
11/9/2022	2108	hanger	3 Potted Gum	4	hanger in canopy	Staff
11/9/2022	2004	removal	patio tree	1	uprooted poor structure	Staff
11/9/2022	2005	removal	patio tree	1	uprooted poor structure	Staff
11/9/2022	422	hanger	African Sumac	4	hanger in canopy	Staff
11/9/2022	275	hanger	American Arbovit	3	hanger in canopy	Staff

11/10/2022	444	clearance	Brazilian Pepper	2	clear, end weight	Staff
11/10/2022	444	clearance	Brazilian Pepper	2	clear, end weight	Staff
11/10/2022	444	clearance	Brazilian Pepper	2	clear, end weight	Staff
11/10/2022	444	clearance	Brazilian Pepper	2	clear, end weight	Staff
11/10/2022	444	clearance	Brazilian Pepper	2	clear, end weight	Staff
11/10/2022	444	clearance	Brazilian Pepper	2	clear, end weight	Staff
11/10/2022	806	removal	Liquid Ambar	2	in decline, dead	Staff
11/10/2022	2068	hanger	Jacaranda	2	hanger in canopy	Staff
11/10/2022	2069	hanger	Jacaranda	2	hanger in canopy	Staff
11/10/2022	711	hanger	Desert Gum	2	hanger in canopy	Staff
11/14//22	374	clean up pine need	Carport roof	2	clean debris from carport roof	Staff
11/15/2022	933	trim	Bottlebrush hedge	35	clear, end weight	Staff
11/16/2022	933	hanger	Lemon Scented gum	2	hanger in canopy	Staff
11/16/2022	933	clean up pine need	clean up	18	clean debris from everywhere	Staff
11/16/2022	602	hanger	2 Aleppo pines	6	hanger in canopy	Staff
11/17/2022	602	hanger	aleppo pine	6	clear, end weight	Staff
11/16/2022	421	trim	African Sumac	6	clear, end weight	Staff
11/29/2022	2092	removal	Leyland Cypress	4	in decline, dead	Staff
11/30/2022	223	hanger	Canary Island Pine	2	hanger in canopy	Staff
12/1/2022	2121	trim	Wilson Holly	3	full trim	Staff
12/1/2022	331	removal	unknown Hedge	3	in decline, dead	Staff
12/1/2022	328	clearance	2 Ficus Benjamina	3	full clearance	Staff
12/1/2022	91	removal	Podocarpus and 2 Brid of parad	8	in decline, dead	Staff
12/2/2022	593	removal	Cypress hedge	15	in decline, dead	Staff
12/5/2022	852	trim	White Birch	2	full trim	Staff
12/5/2022	851	trim	Kaffir Plum	4	full trim	Staff
12/6/2022	851	trim	Weeping Fig	8	full trim	Staff
12/6/2022	854	trim	Crape Myrtle	2	clear, end weight	Staff
12/6/2022	862	trim	Carob	6	clear, end weight	Staff
12/7/2022	885	removal	Brazilian Pepper	2	in decline, dead	Staff
12/8/2022	274	trim	Star Pine	6	full trim	Staff
12/9/2022	21	removal	Fern Pine	16	in decline, dead	Staff
12/9/2022	633	clearance	Brazilian Pepper	2	clear from bldg	Staff
12/9/2022	634	clearance	Brazilian Pepper	2	clear from bldg	Staff
12/12/2022	602	hanger	Scented Gum	2	hanger in canopy	Staff
12/12/2022	951	hanger	Brazilian Pepper	2	hanger in canopy	Staff
12/15/2022	202	clearance	Carrotwood	3	clear, end weight	Staff
12/15/2022	245	clearance	Camphor	3	clear, end weight	Staff
12/15/2022	223	trim	Canary Island Pine	14	full trim	Staff
12/15/2022	223	trim	gold medallion	3	full trim	Staff
12/15/2022	223	clearance	Crape Myrtle	3	clearance	Staff
12/15/2022	223	clearance	Weeping Fig	3	clear from bldg	Staff
12/16/2022	304	trim	Star Pine	3	full trim	Staff
12/19/2022	417	trim	2 king palms	4	full trim	Staff
12/19/2022	2190	trim	Magnolia	3	clear, end weight	Staff
12/19/2022	2191	trim	Sweet Shade	3	full trim	Staff
12/19/2022	26	hanger	Magnolia	2	hanger in canopy	Staff
12/21/2022	868	trim	African Sumac	6	clear, end weight	Staff
12/21/2022	422	trim	Podocarpus Hedge	6	clear, end weight	Staff
12/21/2022	408	removal	Peach	2	resident Request	Staff
1/6/2023	444	removal	Italian Cypress	4	in decline, dead	Staff
1/6/2023	444	removal	queen Palm	4	in decline, dead	Staff
1/6/2023	34	removal	Juniper	2	in decline, dead	Staff
1/6/2023	334	hanger	Brazilian Pepper	3	hanger in canopy	Staff
1/6/2023	803	clearance	Star Pine	3	clear, end weight	Staff
1/11/2023	711	hanger	Desert Gum	2	hanger in canopy	Staff
1/12/2023	625	hanger	Star Pine	2	hanger in canopy	Staff
1/12/2023	664	hanger	Silk Oak	1	hanger in canopy	Staff
1/16/2023	2077	clearance	Magnolia	2	clear, end weight	Staff
1/16/2023	2093	removal	Cyress	3	uprooted poor structure	Staff
1/16/2023	298	clearance	California Pepper	2	clear, end weight	Staff
1/18/2023	37	trim	bottle brush	2	full trim	Staff
1/18/2023	37	trim	Coast live oak	8	full trim	Staff
1/18/2023	2138	removal	Mulberry	15	in decline, dead	Staff
1/19/2023	711	trim	2 Eucalyptus	16	full trim	Staff
1/19/2023	2078	trim	3 Califoria Peppers	12	full trim	Staff
1/20/2023	376	trim	African Sumac	4	full trim	Staff
1/20/2023	384	removal	Yucca	6	in decline, dead	Staff
1/20/2023	343	removal	Ficus Benjamina	6	in decline, dead	Staff
1/20/2023	2123	removal	Cypress	4	in decline, dead	Staff
1/23/2023	231	hanger	Brazilian Pepper	3	hanger in canopy	Staff
1/23/2023	343	removal	Carolina Cherry	4	in decline, dead	Staff

1/24/2023	795	trim	Olive	8	full trim	Staff
1/24/2023	795	trim	3 Canary Island Pines	24	full trim	Staff
1/25/2023	34	removal	Juniper	2	in decline, dead	Staff
1/25/2023	938	trim	Dracaena	4	full trim	Staff
1/25/2023	186	trim	aleppo pine	20	full trim	Staff
1/26/2023	774	hanger	Spotted Gum	4	hanger in canopy	Staff
1/26/2023	131	hanger	Brazilian Pepper	3	hanger in canopy	Staff
1/26/2023	157	trim	flowering Gum	8	full trim	Staff
1/26/2023	157	clearance	White Birch	2	clear off the bldg	Staff
1/26/2023	497	clearance	Camphor	2	clear off the bldg	Staff
1/26/2023	362	removal	2 Mexican Fan Palms	8	in decline, dead	Staff
1/27/2023	809	trim	2 Canary Island Pine	18	full trim	Staff
1/27/2023	2077	clearance	4 Fern Pine	8	clear, end weight	Staff
1/27/2023	411	clearance	Crape Myrtle	3	clearn, end weight	Staff
1/27/2023	456	removal	mexican Fan palm	4	in decline, dead	Staff
1/27/2023	2077	clearance	Crape Myrtle	2	clear, end weight	Staff
1/30/2023	2086	removal	Roballini	3	in decline, dead	Staff
1/30/2023	2053	removal	Juniper	3	in decline, dead	Staff
1/30/2023	2077	clearance	Magnolia	2	clear, end weight	Staff
1/30/2023	583	removal	Mimosa	6	in decline, dead	Staff
1/30/2023	319	hanger	Fern Pine	2	hanger in canopy	Staff
2/2/2023	202	clearance	Canary Island Pine	1	clear, end weight	Staff
2/3/2023	11	removal	Orange tree	4	resident Request	Staff
2/3/2023	11	removal	Lemon	2	resident Request	Staff
2/6/2023	763	hanger	Bottlebrush	1	hanger in canopy	Staff
2/7/2023	176	clearance	Liquid Ambar	2	clear, end weight	Staff
2/7/2023	463	removal	Brazilian Pepper	8	in decline, dead	Staff
2/9/2023	367	clearance	2 Carolina Cherries	4	clear, end weight	Staff
2/9/2023	321	clearance	California Pepper	2	clear, end weight	Staff
2/9/2023	73	clearance	Alex Vornitovia	2	clear, end weight	Staff
2/10/2023	59	removal	Bottlebrush	4	in decline, dead	Staff
2/21/2023	195	clearance	Magnolia	3	clear, end weight	Staff
2/22/2023	791	hanger	Bottle Brush	3	hanger in canopy	Staff
2/22/2023	66	removal	Indian Laurel	6	uprooted poor structure	Staff
2/24/2023	665	removal	2 Banana trees	4	resident Request	Staff
2/28/2023	64	hanger	Bottlebrush	2	hanger in canopy	Staff
2/28/2023	2029	removal	Spartan Juniper	3	uprooted poor structure	Staff
3/1/2023	53	removal	Chitalpa	4	uprooted poor structure	Staff
3/1/2023	458	removal	Pomegranate	4	resident Request	Staff
3/1/2023	557	clearance	Jacaranda	3	clear, end weight	Staff
3/1/2023	170	clearance	Italian Cypress	2	clear, end weight	Staff
3/2/2023	2092	hanger	Brazilian Pepper	2	hanger in canopy	Staff
3/2/2023	2069	removal	Yucca Gloriosa	4	in decline, dead	Staff
3/2/2023	2003	clearance	2 Magnolias	4	clear, end weight	Staff
3/3/2023	758	removal	redbud	3	uprooted poor structure	Staff
3/6/2023	443	hanger	Brazilian Pepper	6	hanger in canopy	Staff
3/9/2023	2160	hanger	Australian Willow	6	hanger in canopy	Staff
3/10/2023	2004	removal	Carolina Cherry	1.5	in decline, dead	Staff
3/10/2023	2004	removal	Carolina Cherry	1.5	in decline, dead	Staff
3/10/2023	2190	trim	5 Manolia	2	full trim	Staff
3/10/2023	22	removal	Peach	1	resident Request	Staff
3/10/2023	202	hanger	Carrotwood	1	hanger in canopy	Staff
3/13/2023	787	removal	Ficus Benjamina	6	in decline, dead	Staff
3/13/2023	98	hanger	Canary Island Pine	2	hanger in canopy	Staff
3/13/2023	220	trim	Loquat	3	full trim	Staff
3/13/2023	123	hanger	Silk Oak	2	hanger in canopy	Staff
3/13/2023	202	hanger	Canary Island Pine	2	hanger in canopy	Staff
3/14/2023	792	hanger	Canary Island Pine	4	hanger in canopy	Staff
3/15/2023	774	hanger	Brazilian Pepper	2	hanger in canopy	Staff
3/15/2023	846	hanger	African Sumac	3	hanger in canopy	Staff
3/20/2023	225	removal	Hollywood juniper	4	uprooted poor structure	Staff
3/20/2023	642	hanger	patio tree	2	hanger in canopy	Staff
3/20/2023	89	hanger	sweet Gum	1	hanger in canopy	Staff
3/22/2023	913	hanger	Bottle Brush	2	hanger in canopy	Staff
3/22/2023	926	removal	aleppo pine	8	uprooted poor structure	Staff
3/23/2023	115	removal	Juniper	4	uprooted poor structure	Staff
3/23/2023	489	clearance	Bottle tree	2	clearance in canopy	Staff
3/23/2023	550	trim	Canary Island Pine	10	trim in canopy	Staff
3/23/2023	551	trim	Canary Island Pine	10	trim in canopy	Staff
3/23/2023	208	trim	2 Canary Island	20	trim in canopy	Staff
3/24/2023	2068	removal	Photinia	3	in decline, dead	Staff
3/24/2023	201	trim	2 Canary Island Pine	20	trim in canopy	Staff
3/24/2023	202	trim	Canary Island Pine	10	trim in canopy	Staff

3/24/2023	110	clearance	Fern Pine	3	clearance in canopy	Staff
4/7/2023	774	removal	Silk Oak	6	in decline, dead	Staff
4/7/2023	779	removal	Volunteers	2	in decline, dead	Staff
4/10/2023	783	trim	yucca	4	trim in canopy	Staff
4/10/2023	942	removal	henkelli	6	in decline, dead	Staff
4/10/2023	775	trim	Spotted Gum	2	full trim	Staff
4/11/2023	2038	removal	Chitalpa	4	in decline, dead	Staff
4/11/2023	2072	trim	Date Palm	5	full trim	Staff
4/11/2023	235	trim	5 curappia saeva	4	full trim	Staff
4/12/2023	459	clearance	aleppo pine	3	clear, end weight	Staff
4/12/2023	459	clearance	Brazilian Pepper	1	clear, end weight	Staff
4/12/2023	459	clearance	Brazilian Pepper	1	clear, end weight	Staff
4/12/2023	459	clearance	Ligustrum	1	clear, end weight	Staff
4/12/2023	459	clearance	Ligustrum	1	clear, end weight	Staff
4/12/2023	459	removal	aleppo pine	4	in decline, dead	Staff
4/12/2023	459	clearance	Brazilian Pepper	1	clear, end weight	Staff
4/12/2023	459	clearance	aleppo pine	2	clear, end weight	Staff
4/12/2023	459	clearance	aleppo pine	2	clear, end weight	Staff
4/12/2023	459	clearance	aleppo pine	2	clear, end weight	Staff
4/12/2023	459	clearance	Brazilian Pepper	1	clear, end weight	Staff
4/12/2023	464	clearance	Brazilian Pepper	1	clear, end weight	Staff
4/12/2023	464	clearance	Brazilian Pepper	1	clear, end weight	Staff
4/12/2023	464	clearance	Brazilian Pepper	1	clear, end weight	Staff
4/12/2023	464	clearance	Brazilian Pepper	1	clear, end weight	Staff
4/12/2023	464	clearance	Brazilian Pepper	1	clear, end weight	Staff
4/12/2023	464	clearance	Brazilian Pepper	1	clear, end weight	Staff
4/12/2023	464	clearance	Brazilian Pepper	1	clear, end weight	Staff
4/12/2023	464	clearance	Brazilian Pepper	1	clear, end weight	Staff
4/12/2023	464	clearance	Brazilian Pepper	1	clear, end weight	Staff
4/12/2023	464	clearance	Brazilian Pepper	1	clear, end weight	Staff
4/12/2023	464	removal	Shamel Ash	2	in decline, dead	Staff
4/12/2023	464	removal	Brazilian Pepper	2	in decline, dead	Staff
4/12/2023	700	clearance	glossy privet	2	clear, end weight	Staff
4/12/2023	464	clearance	Ficus Benjamina	2	clear, end weight	Staff
4/12/2023	464	removal	Ligustrum	2	in decline, dead	Staff
4/13/2023	737	hanger	African Sumac	2	hanger in canopy	Staff
4/18/2023	587	trim	stone Pine	20	trim in canopy	Staff
4/18/2023	702	removal	Carob	15	in decline, dead	Staff
4/19/2023	2075	clearance	3 Fern Pine	6	clearance in canopy	Staff
4/19/2023	353	removal	Liquid Ambar	7	in decline, dead	Staff
4/24/2023	449	trim	Edible	4	trim in canopy	Staff
4/24/2023	257	removal	Liquid Ambar	8	in decline, dead	Staff
4/24/2023	906	hanger	Brazilian Pepper	3	hanger in canopy	Staff
4/26/2023	2066	removal	Crape Myrtle	4	in decline, dead	Staff
4/26/2023	23	removal	Maleluca	6	in decline, dead	Staff
5/1/2023	15	hanger	Peppermint	2	hanger in canopy	Staff
5/1/2023	256	trim	King palm	2	full trim	Staff
5/5/2023	2103	trim	Dracaena	4	full trim	Staff
5/5/2023	501	trim	Photinia	3	full trim	Staff
5/5/2023	2039	trim	Long Leafed	4	full trim	Staff
5/5/2023	560	trim	Japanese Maple	3	full trim	Staff
5/5/2023	936	trim	glossy privet	6	full trim	Staff
5/12/2023	705	trim	Torulosa	3	full trim	Staff
5/12/2023	609	removal	Bottle tree	4	in decline, dead	Staff
5/12/2023	829	removal	Loquat	3	in decline, dead	Staff
5/16/2023	328	trim	redbud	2	full trim	Staff
5/18/2023	736	clearance	Bottlebrush	2	clear, end weight	Staff
5/19/2023	2025	trim	Wilson Holly	3	full trim	Staff
5/19/2023	125	hanger	Canary Island Pine	3	hanger in canopy	Staff
5/22/2023	910	clearance	Zelcova Serrata	2	clear, end weight	Staff
5/22/2023	909	clearance	Zelcova Serrata	2	clear, end weight	Staff
5/22/2023	537	clearance	Flax Leaf	2	clear, end weight	Staff
5/24/2023	157	clearance	hedge of Brazilian Pepper	3	clear off the bldg	Staff



STAFF REPORT

DATE: June 26, 2023
FOR: Landscape Committee
SUBJECT: Tree Removal Request: 100-A One Silk Oak Tree

RECOMMENDATION

Approve the request for the removal of one Silk Oak tree located at 100-A Via Estrada.

BACKGROUND

The requestor became a Member in February 2015, and is requesting the removal of one Silk Oak tree, *Grevilia, robusta*, located in front of the unit.

The reasons cited for the removal are structural and sewer damage. There is one additional signature on the Mutual Request Form in favor of the removal (Attachment 1).

The tree was last trimmed June of 2022; This tree is on a three-year trim cycle and future trimming is tentatively scheduled for fiscal year 2025. The height of the tree is approximately 60 feet with a trunk diameter of approximately 25 inches. The tree is growing in the shrub bed approximately six feet from the unit (Attachment 2).

The requestor did submit a Mutual Request Form one year ago for the removal of this tree and four Pine trees. At that time, one Pine tree was approved for removal and the other trees were approved for trimming. All of this work has been completed.

DISCUSSION

Based on the second request stating that there was lifting in the bedroom closest caused by the Fern Pine, staff dug a trench between the tree and the unit to conduct a more thorough investigation. Last year's report was based on plumbing issues, not floor separation.

Two very large roots were discovered growing under the foundation (Attachment 3). Given the general location of the roots in relationship to the bedroom floor raising, it is possible that this issue is caused by the roots. In some cases, a root trench could be performed to eliminate future damaging roots. However, in this case, there is not sufficient space available from the trunk to the roots. Cutting these size roots would cause an unstable condition for the tree.

Staff is recommending the removal of the Silk Oak tree to prevent any further infrastructure damage. Removal of the Silk Oak would also allow more room for the neighboring Canary Island pine to flourish.

FINANCIAL ANALYSIS

The cost to remove the Silk Oak tree is approximately \$1,975 and the value of the Silk Oak tree is \$4,040 based on the tree inventory data.

Prepared By: Bob Merget, Landscape Manager

Reviewed By: Kurt Wiemann, Director of Field Operations

Jayanna Abolmoloki, Landscape Administrative Assistant

Committee Routing: None

ATTACHMENT(S)

Attachment 1: Mutual Landscape Request Form

Attachment 2: Tree Photographs

**MUTUAL LANDSCAPE REQUEST FORM****PLEASE NOTE: THIS FORM IS NOT INTENDED FOR ROUTINE MAINTENANCE REQUESTS**

For all non-routine requests, please fill out this form. Per the policy of your Mutual, if your request falls outside the scope of the managing agent's authority, it will be forwarded to the Mutual's Landscape Committee for review. If you are unsure whether your request falls into this category, first contact Resident Services at 597-4600 in order to make that determination.

PLEASE RETURN COMPLETED REQUEST FORM TO RESIDENT SERVICES.**Resident/Owner Information***You must be an owner to request non-routine Landscape requests.*

100 Via Estrada Unit A	4/5/23
Address	Today's Date
Barbara Rush	(949) 637-5965
Resident's Name	Telephone Number

Non-Routine Request*Please checkmark the item that best describes your request. If none apply, please checkmark "Other" and explain.*

☒ Tree Removal
 ☐ New Landscape
 ☐ Off-Schedule Trimming

☐ Other (explain): _____

Reason for Request*Please checkmark the item(s) that best explain the reason for your request.*

☒ Structural Damage
 ☒ Sewer Damage
 ☐ Overgrown
 ☐ Poor Condition

☐ Litter/Debris
 ☐ Personal Preference

☐ Other (explain): _____

GUIDELINES:

- Structural/Sewer Damage: Damage to buildings, sidewalks, sewer pipes, or other facilities may justify removal if corrective measures are not practical.
- Overgrown/Crowded: Trees or plants that have outgrown the available space may justify removal.
- Damaged/Declining Health: Trees or plants that are declining in health will be evaluated for corrective action before removal/replacement is considered.
- Litter and Debris: Because all trees shed litter seasonally, generally this is not an adequate reason to justify removal. However, if granted, removal/replacement may be at the resident's expense.
- Personal Preference: Because one does not like the appearance or other characteristics of the tree or plant generally does not justify its removal. However, if granted, removal/replacement is usually at the resident's expense.

Description & Location of Request

Please briefly describe the situation and the exact location of the subject of the request (e.g., "roots of pine tree in front of manor XYZ are lifting the sidewalk"). Attach pictures as necessary.

Second request to remove the silk oak tree (tree #6 photo SA21688546/May 2022). It was trimmed vs removed July 2022. Roots from silk oak interfering with the foundation of master bedroom. The floor is very uneven and has been shifting daily this week. This accompanied by a sewer and musty smell which has been present on and off with no permanent remedy since December. Uneven area begins where the root was found under the tub to the window in front of the tree, to the tree base. The tub was removed and pipes replaced Dec 2022. From my research the standard recommendation is for silk oaks to be planted a minimum of 15 feet from a foundation -- this tree is only 6 feet away, they are also known to have invasive roots reaching up to 120 feet and have a history of creating foundation issues. See photos. Removal of this tree is imperative to the life of the foundation and stability of the walls for all four connecting units. See photos. Request: please have tree inspector make appointment with me to view indoor issue from roots.

THIS IS AN URGENT ISSUE TO AVOID ADDITIONAL DAMAGE. REMOVING THE SILK OAK & ROOTS ALONG WITH COMPLETING ANY FIXES TO THE FOUNDATION IS IMPERATIVE. PLEASE EXPEDITE.

Signatures of All Neighbors Affected By This Request

Because your request may affect one or more of your neighbors, it is imperative that you obtain their signatures, manor numbers, and whether they are for, undecided, or against this request.

Signature	Manor #	For	Undecided	Against
Xuelian Wu	N	X		

(Please attach a separate sheet if more signatures are necessary.)

Acknowledgement - Owner

By signing, you are acknowledging this request.

Barbara Rush

Barbara Rush

Owner's Signature

Owner's Name

OFFICE USE ONLY

MOVE-IN DATE: _____

DATE: _____ INITIALS: _____

530 _____ 540 _____

570 _____ LAST PRUNED: _____

RELANDSCAPED: _____

NEXT TIME: _____

TREE SPECIES: _____

COMMENTS: _____

TREE VALUE: _____ TREE REMOVAL COST: _____

Attachment 2













STAFF REPORT

DATE: June 26, 2023
FOR: Landscape Committee
SUBJECT: Tree Removal Request: 559–C One Fern Pine Tree

RECOMMENDATION

Approve the request for the removal of one Fern Pine tree located at 559-C Avenida Sevilla.

BACKGROUND

The requestor became a Member in October 2017, and is requesting the removal of one Fern Pine tree, *Podocarpus, gracilior*, located at the side of the unit.

The reason cited for the removal is overgrown. There are no additional signatures on the Mutual Request Form (Attachment 1).

There is no tree work history on this tree as it has been previously maintained by the grounds maintenance section on their regular scheduled visits. Smaller trees that can be reached by hand tools from the ground are generally maintained by grounds crews. Trees are not added to the tree cycle schedule until they outgrow the reach of ground work. The tree would be on a three-year trim cycle should we start routine tree maintenance. The height of the tree is approximately 21 feet, with a trunk diameter of approximately 5 inches. The tree is growing in the flower bed approximately five feet from the unit (Attachment 2).

DISCUSSION

At the time of the inspection the tree was found to be in good health, with no pests or previous pest damage. The tree has an unbalanced canopy in need of clearance trimming which is scheduled in the next 45 days. There was no trunk damage, decay, or deadwood present.

The resident stated the tree was originally planted as a resident request for screening for the front room window. This species of *Podocarpus* grows upwards of 60 feet in height with a 40-foot spread. These trees can grow anywhere from 12 to 36 inches per year. Given the location of this tree, it would require constant trimming to maintain it in this tight spot.

Additionally, there are solar panels located on the adjacent carports. This tree would become an issue with solar power efficiency should it be allowed to continue to grow in this location.

Staff is recommending the removal of the Fern Pine now at a minimal cost to the Mutual, in lieu of waiting for it to become a bigger problem.

FINANCIAL ANALYSIS

The cost to remove the Fern Pine tree is approximately \$345 and the value of the Fern Pine tree is \$1,380 based on the tree inventory data.

Prepared By: Bob Merget, Landscape Manager

Reviewed By: Kurt Wiemann, Director of Field Operations

Jayanna Abolmoloki, Landscape Administrative Assistant

Committee Routing: None

ATTACHMENT(S)

Attachment 1: Mutual Landscape Request Form

Attachment 2: Photographs

MUTUAL LANDSCAPE REQUEST FORM

PLEASE NOTE: THIS FORM IS NOT INTENDED FOR ROUTINE MAINTENANCE REQUESTS

For all non-routine requests, please fill out this form. Per the policy of your Mutual, if your request falls outside the scope of the managing agent's authority, it will be forwarded to the Mutual's Landscape Committee for review. If you are unsure whether your request falls into this category, first contact Resident Services at 597-4600 in order to make that determination.

PLEASE RETURN COMPLETED REQUEST FORM TO RESIDENT SERVICES.

Resident/Owner Information

You must be an owner to request non-routine Landscape requests.

559-C Overnick Sevilla
Address

5/11/23
Today's Date

Susan Belian
Resident's Name

559-960-0970
Telephone Number

Non-Routine Request

Please checkmark the item that best describes your request. If none apply, please checkmark "Other" and explain.

- ☒ Tree Removal ☐ New Landscape ☐ Off-Schedule Trimming
☐ Other (explain): _____

Reason for Request

Please checkmark the item(s) that best explain the reason for your request.

- ☐ Structural Damage ☐ Sewer Damage ☒ Overgrown ☐ Poor Condition
☐ Litter/Debris ☐ Personal Preference
☐ Other (explain): Planned for privacy bush, got 20' + tree too close to house

GUIDELINES:

- **Structural/Sewer Damage:** Damage to buildings, sidewalks, sewer pipes, or other facilities may justify removal if corrective measures are not practical.
- **Overgrown/Crowded:** Trees or plants that have outgrown the available space may justify removal.
- **Damaged/Declining Health:** Trees or plants that are declining in health will be evaluated for corrective action before removal/replacement is considered.
- **Litter and Debris:** Because all trees shed litter seasonally, generally this is not an adequate reason to justify removal. However, if granted, removal/replacement may be at the resident's expense.
- **Personal Preference:** Because one does not like the appearance or other characteristics of the tree or plant generally does not justify its removal. However, if granted, removal/replacement is usually at the resident's expense.

Agenda Item #10

Page 3 of 9

Description & Location of Request

Please briefly describe the situation and the exact location of the subject of the request (e.g., "roots of pine tree in front of manor XYZ are lifting the sidewalk"). Attach pictures as necessary.

Adjacent to 559 C on West side directly in center of windows. Four feet from foundation (cracks) and branches touching glass.

Signatures of All Neighbors Affected By This Request

Because your request may affect one or more of your neighbors, it is imperative that you obtain their signatures, manor numbers, and whether they are for, undecided, or against this request.

Signature	Manor #	For	Undecided	Against
Susan Balorian 559C				

(Please attach a separate sheet if more signatures are necessary.)

Acknowledgement - Owner

By signing, you are acknowledging this request.

Susan Balorian
Owner's Signature

Susan Balorian
Owner's Name

OFFICE USE ONLY

REWEAVE DATE 10/19/AD17

536 540

RELANDSCAPED

DATE

INITIALS

STD

LAST PRUNED

NEXT TIME

TREE SPECIES

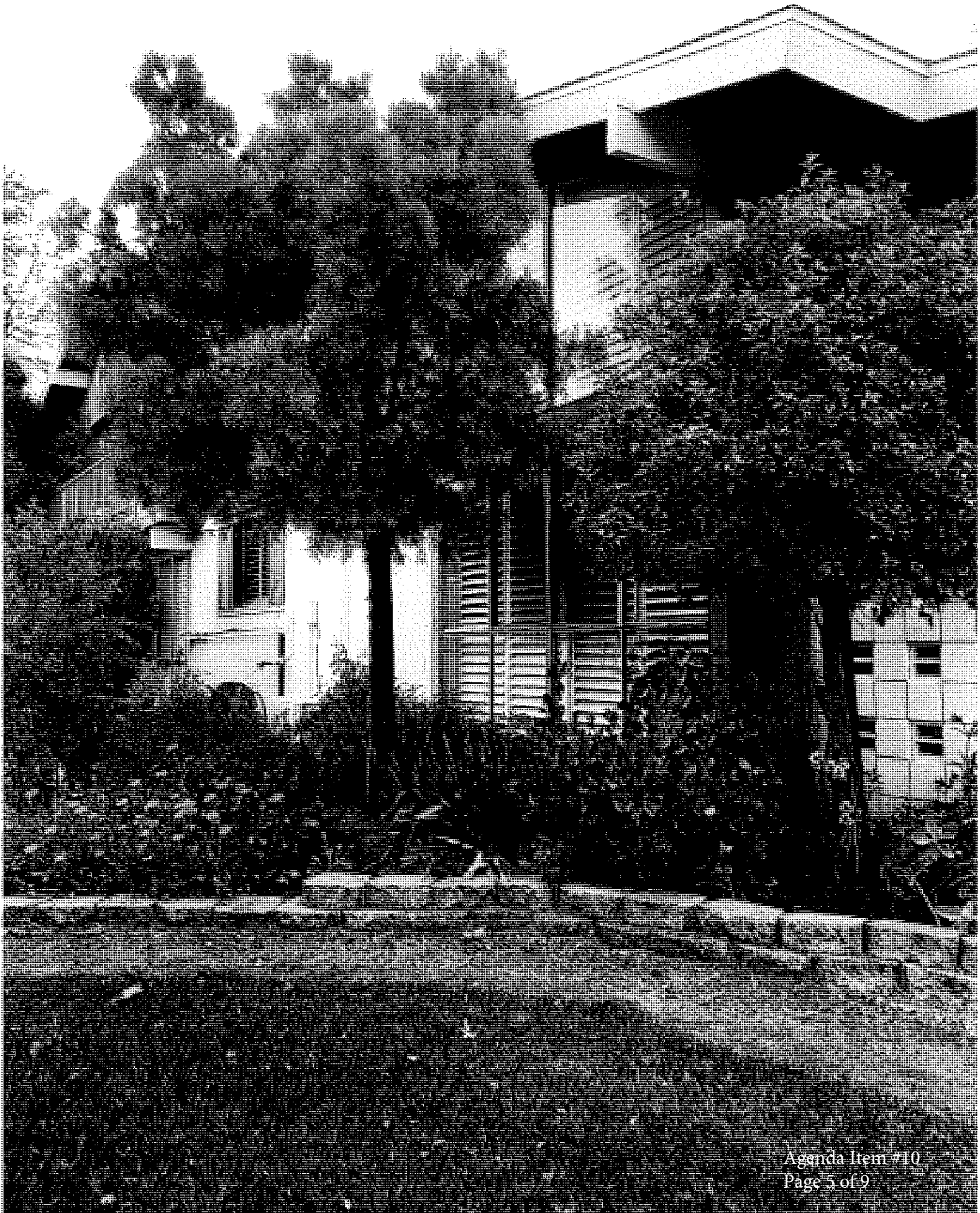
COMMENTS

TREE VALUE

TREE REMOVAL COST

Agenda Item 710

Page 4 of 9



Attachment 2







